

POWERS / LOWENFELS GALLERY

53 STANTON STREET, NEW YORK, NY 10002

FOR IMMEDIATE RELEASE:

POWERS & LOWENFELS PRESENT, CRUST: THADDEUS RADELL | ALEX EDWARDS

New York, NY — Steven S. Powers and Joshua Lowenfels present, CRUST: Thaddeus Radell | Alex Edwards. Opening reception Wednesday, September 3, 6-8pm.

CRUST exhibits the paintings of Thaddeus Radell (1956-) and Alex Edwards (1969-). Radell's figurative works evolve with successive layers of paint in his New York studio, while Edwards pushes paint en plein air in the English countryside. Radell's studio work has an inescapable existentialism—an interiority—skin, blood, and bones. At the same time, Edwards' on-site landscapes are an exteriority—crust, mantle, and core.

Radell's recent "shroud" paintings are infused with history and mystery. Painted on loose strips of burlap, one first thinks of the "Shroud of Turin," with its vague body impression; however, Radell's works are bold and built, yet nothing is overtly defined. The artisans of the Fayum funerary portraits in Roman Egypt created shrouds while the subject was alive, but intended for the journey to the afterlife. Radell's heavily impastoed works result in figures that merge body and soul. In his head studies details are buried and excavated, lost and then found as facial features emerge from chunks of wax and oil paint.

The immediacy in Edwards' work is laid upon the canvas. His shorthand for the lay of the land, the grade of the hills, and the colors of grasses and other flora in a shifting sky are effectively painted in thick oil paint applied with brushes, cards, and knives. Clouds roll in and out, hues shift with the light, and shadows come and go—his paintings are a time-lapse rendered into a single moment.

Radell lives and paints in upstate New York and is a professor of art at The Borough of Manhattan Community College (BMCC). Edwards lives and paints in Dorset in the southwest of England. His working life has seen him living and working for 30 years in the safari business in East Africa.

CRUST: Thaddeus Radell | Alex Edwards runs from September 3 - October 11, 2025 with an artist's reception on Wednesday, September 3, 6-8pm.

The gallery is open Thursday-Sunday 12:00-6:00 pm. To keep up to date on gallery features follow Steven S. Powers (@stevenspowers) and Joshua Lowenfels (@ployaarrtt) on Instagram.

Contact:
Steve Powers
STEVEN S. POWERS
917-518-0809
steve@stevenspowers.com

POWERS / LOWENFELS GALLERY

53 STANTON STREET, NEW YORK, NY 10002

RADELL **CRUST** EDWARDS



Thaddeus Radell (1946-)
Head Study
Oil, wax on panel
Date: 2023
Size: 15" x 12"



Alex Edwards (1969-)
Towards Whitesheet
Oil on canvas
Date: 2025
Size: 14 x 16"

POWERS / LOWENFELS GALLERY

53 STANTON STREET, NEW YORK, NY 10002



Thaddeus Radell (1946-)
(5) Shrouds Paintings Shown as a Group
Oil on burlap
Date: 2025
Sizes range: +/- 85" x 19"

POWERS / LOWENFELS GALLERY

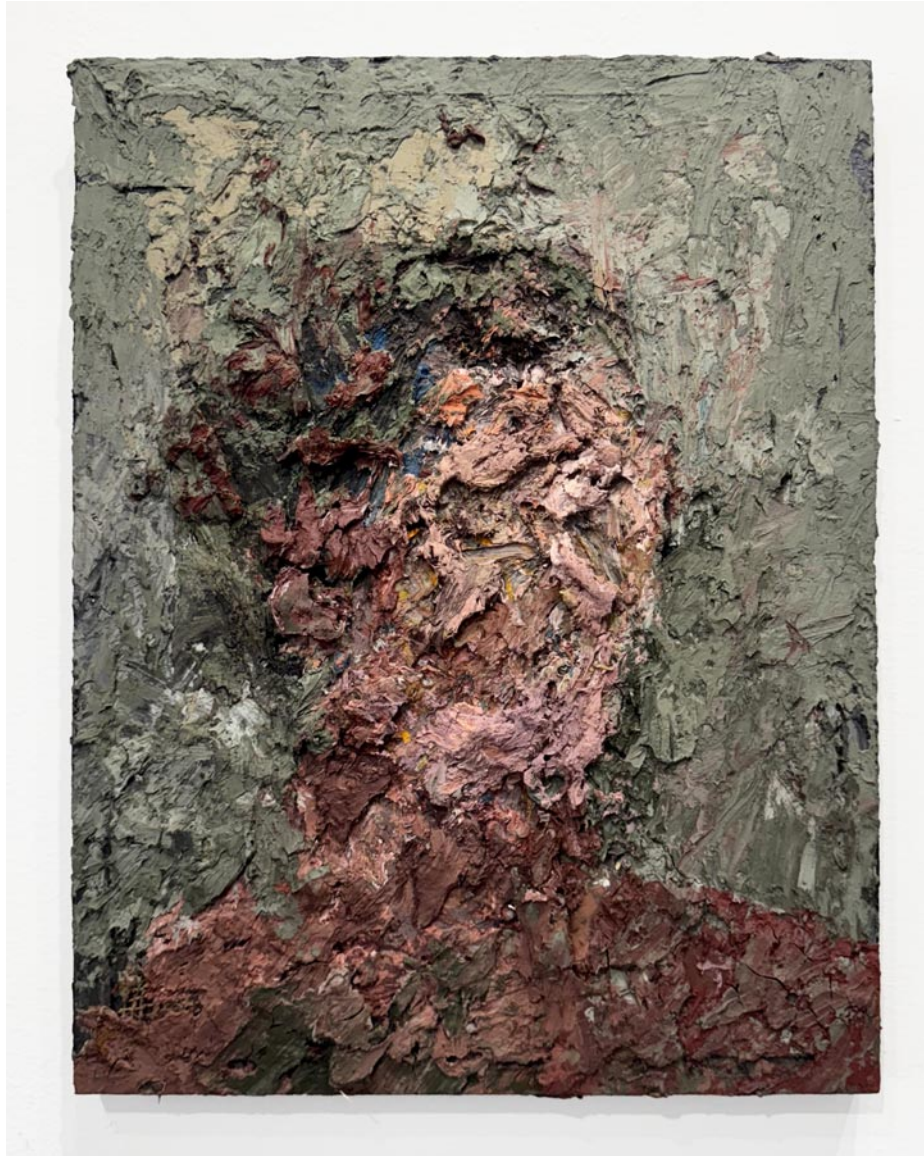
53 STANTON STREET, NEW YORK, NY 10002



Alex Edwards (1969-)
Install Shot of 6 Paintings
Oil on canvas

POWERS / LOWENFELS GALLERY

53 STANTON STREET, NEW YORK, NY 10002



Thaddeus Radell (1946-)

Portrait Study (Lear)

Oil, wax on panel

Date: 2023

Size: 18" x 14"

POWERS / LOWENFELS GALLERY

53 STANTON STREET, NEW YORK, NY 10002



Alex Edwards (1969-)
Rotherley Down Evening Sun II
Oil on canvas
Size: 14 x 16"